

VisAcq AutoTrack

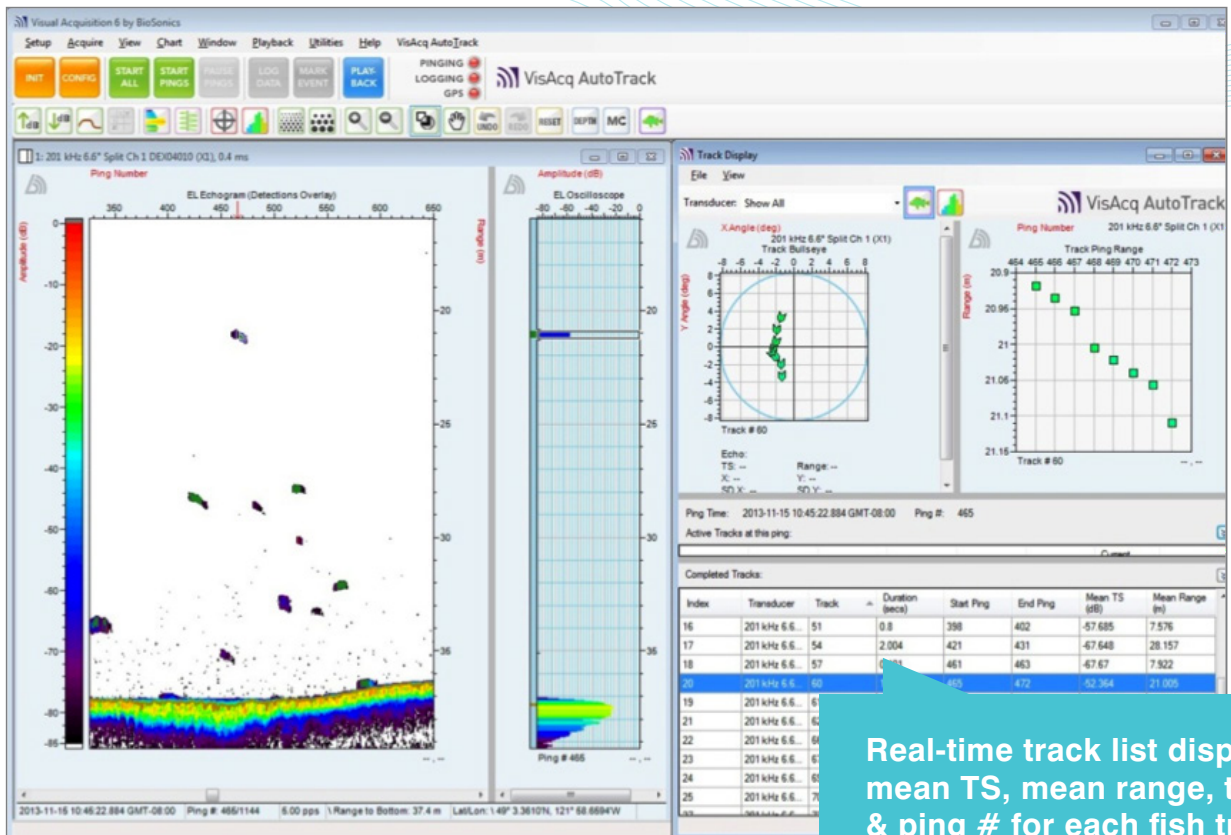
REAL-TIME PROCESSING SOFTWARE FOR FISHERIES HYDROACOUSTIC DATA

Software Features

- Automatically build echo lists, fish track lists, and summary reports
- Calculate fish density by depth strata
- Measure fish distribution over distance/time
- Determine fish size (TS) distribution...all automatically and in real-time
- Access results immediately as CSV files
- Compatible with DT-X Echosounder data files

Software Highlights

- Instantly obtain usable information for fisheries management
- Save countless hours of data processing time and effort
- Process during data collection and walk off the boat with the information you need
- Utilize powerful post-processing tools for reanalysis

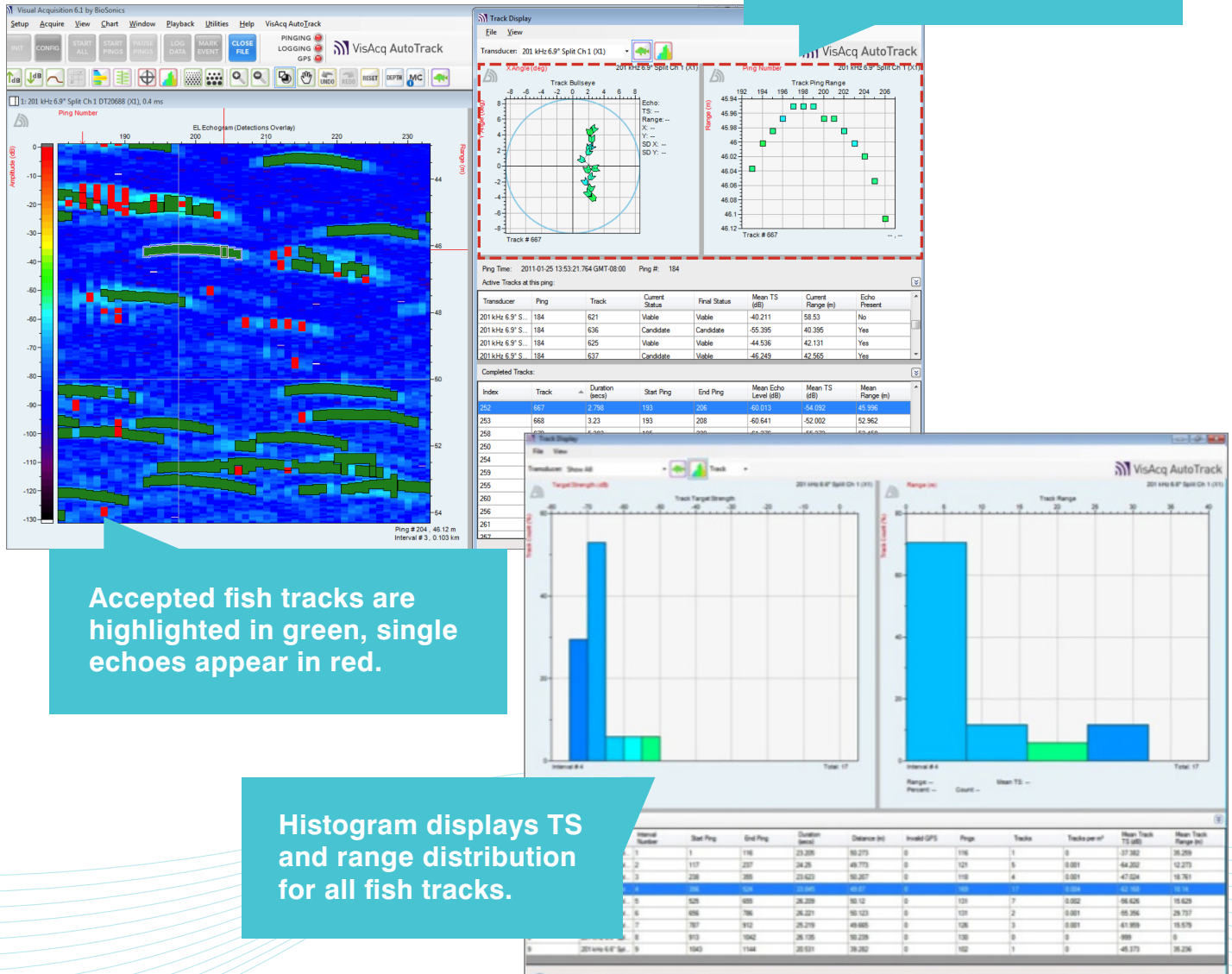


Real-time track list displays mean TS, mean range, time, & ping # for each fish track.

VisAcq AutoTrack™

Easy to learn and fun to use. Download your free demo version today!
 Visit www.biosonicsinc.com/product-software.asp

View the echoes that form each fish track.



The screenshot displays the VisAcq AutoTrack software interface. On the left is an echogram showing depth (0 to -130 meters) versus ping number (190 to 230). Accepted fish tracks are highlighted in green, and single echoes appear in red. On the right, the 'Track Display' window shows a 'Track Bullseye' and a 'Track Ping Range' plot. Below these are tables for 'Active Tracks at this ping' and 'Completed Tracks'. At the bottom, a histogram displays the distribution of Target Strength (TS) and Track Range for all fish tracks.

Accepted fish tracks are highlighted in green, single echoes appear in red.

Histogram displays TS and range distribution for all fish tracks.

Transducer	Ping	Track	Current Status	Final Status	Mean TS (dB)	Current Range (m)	Echo Present
201 kHz 6.9° S	184	621	Viable	Viable	-40.211	58.53	No
201 kHz 6.9° S	184	636	Candidate	Candidate	-55.395	40.395	Yes
201 kHz 6.9° S	184	625	Viable	Viable	-44.536	42.131	Yes
201 kHz 6.9° S	184	637	Candidate	Viable	-45.249	42.565	Yes

Index	Track	Duration (secs)	Start Ping	End Ping	Mean Echo Level (dB)	Mean TS (dB)	Mean Range (m)
253	667	3.762	192	205	-43.623	-43.623	43.962
253	668	3.223	193	208	-50.641	-52.002	52.962
258	670	6.992	195	208	-44.335	-44.335	44.458

System Requirements

Operating System: Windows Vista or newer; Windows 7 or newer strongly recommended.

Software Prerequisites: Requires Microsoft .NET framework. If you are running Windows Vista SP2, or Windows 7 or newer, the correct version of .NET is already installed on your computer.

Additional Software Requirements: PDF reader (to view the User Guides)

Computer Specifications: Communication: at least one wired Ethernet connector (RJ45); Memory: at least 1GB required; at least 2GB strongly recommended; Hard Drive: at least 50GB required; at least 250GB strongly recommended; Display Resolution: at least 1024x768 - more is better; CPU: 1 gigahertz (GHz) or faster 32-bit (x86) or 64-bit (x64) processor

A ruggedized Toughbook class computer with anti-glare, anti-reflective sunlight viewable display is highly recommended for field work.